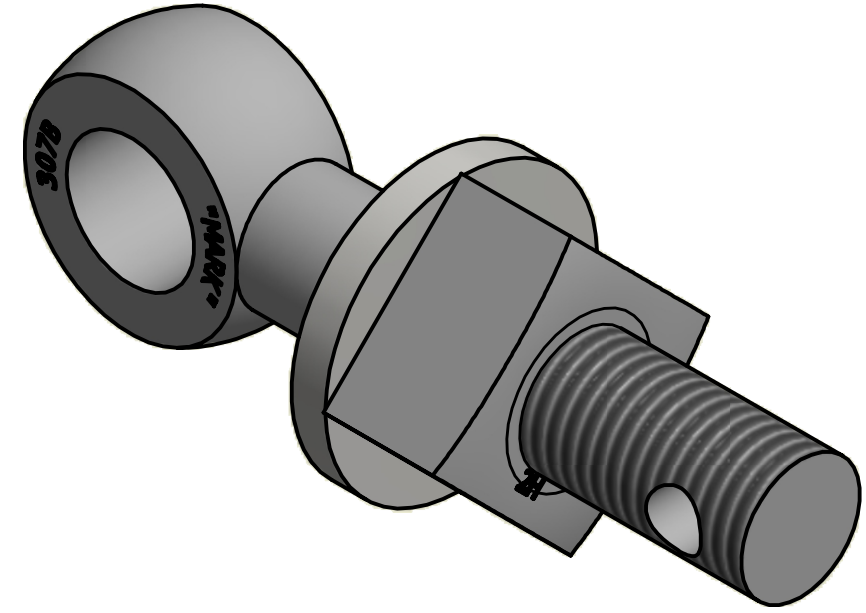
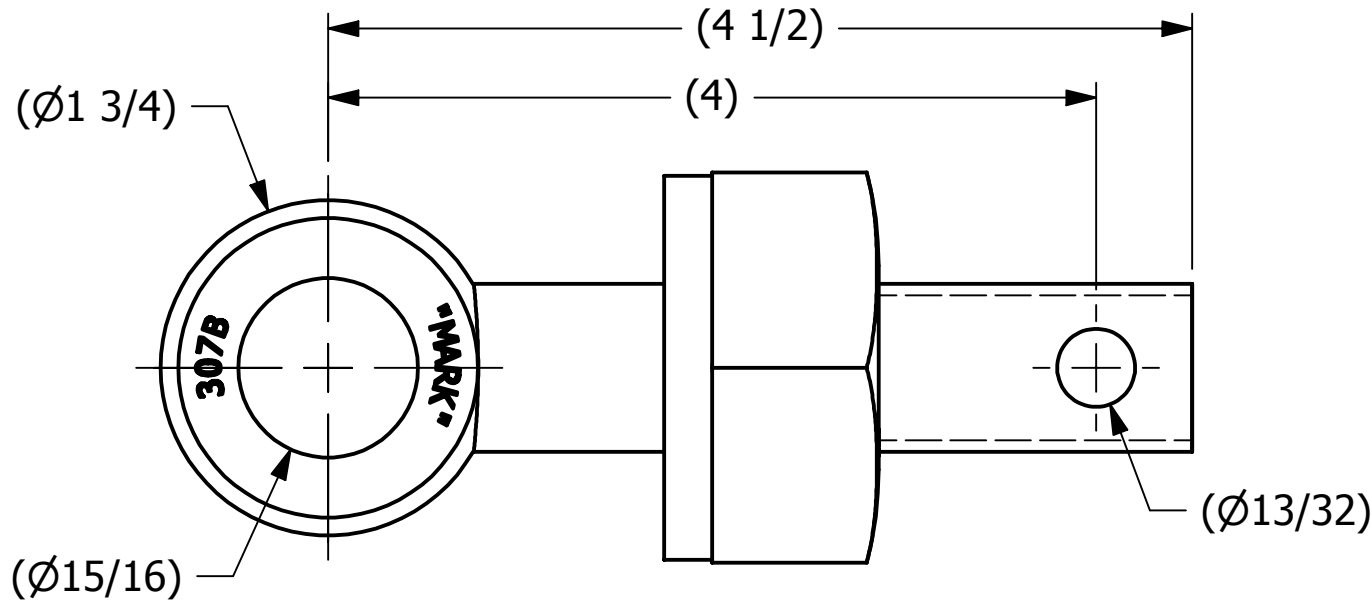
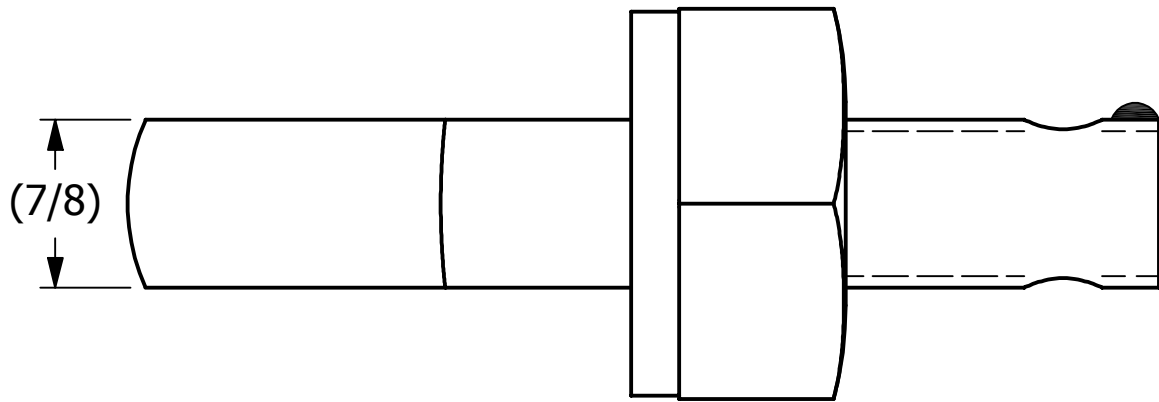



SALES DRAWING

SALES DRAWING



ISOMETRIC VIEW

B	CHL	3-17-09	CHANGED EYEBOLT MATERIAL
A	CHL	1-3-08	NEW PART ADDED TO THE SYSTEM
REV	BY	DATE	DESCRIPTION

UNLESS OTHERWISE SPECIFIED DIMENSIONAL TOLERANCES FRACTIONAL: $\pm 1/16$ X.XX: $\pm .03$ X.XXX: $\pm .015$ ANGULAR: $\pm 1^\circ$ DEBURR ALL SHARP EDGES. ALL MACHINED SURFACES TO HAVE A 125 RMS FINISH UNLESS NOTED OTHERWISE. THIRD ANGLE PROJECTION	DRAWN BY:	CHL	 <b>SALCO PRODUCTS, INC.</b>	
	CHECKED BY:	PJG		
	PROTOTYPE BY:	CHL	PART NAME: <b>EYEBOLT ASSEMBLY 7/8"X4 1/2"</b>	
	PROTOTYPE DATE:	5/15/2007	MATERIAL: <b>CARBON STEEL</b>	
	APPROVED FOR PRODUCTION BY:	PJG	PROJECT #: <b>WAG0426</b> SHEET #: <b>1 OF 1</b> SCALE: <b>1:1</b>	
PRODUCTION DATE:		1/3/2008	DRAWING #:	PART #:
			<b>B23571</b>	<b>EB7845HA</b>

THIS PRINT, PROPERTY OF SALCO PRODUCTS INC., CONTAINS PROPRIETARY INFORMATION AND MUST NOT BE COPIED, REPRODUCED, OR USED DETRIMENTALLY TO OUR INTEREST.